

KAMTRONIX AUTOMATION



A Step To Precision

Manufacturers Of:

- Mini CNC Router
- CNC Engraving Cum Milling Machine
- CNC JewelMill
- CNC Turning Engraving Machine
- Special Purpose Machine(SPM)
- Industrial Automation



Contact : +91-9711776475
E-Mail : kamtronixautomation@gmail.com
Website : www.kamtronixautomation.com

Address
Plot No.134, Pocket 0, Sector 3,
DSIIDC, Bawana, Delhi-110039

BE GREEN
LEAVE IT
ON THE SCREEN



We request you to use Electronic Copy of this Catalog to help us Save Paper
and contribute to SAVE our Beautiful Nature and World



Hiwin rolled and grounded ballscrews. Rolled ballscrews are made through a rolling process of the screw spindle instead of a grinding process, at a lower production cost. Ballscrews provide smooth movement and low friction which can be supplied quickly from stock. Grounded ballscrews are made through high precision grinding process for position control within few microns.



Closed position loop for no loss of movement synchronization. Smooth motor movement and extra low motor noise. Based on latest DSP technology.
Servo Motors for closed loop high positioning results. Quick response, no delay .No loss of steps, no hunting; no overshooting.



Mach3 is very rich in features and provides a great value to those needing a CNC control software package. Mach3 works on most Windows PC's to control the motion of motors (stepper & servo) by processing G-Code. While comprising many advanced features, it is the most intuitive CNC control software available. Mach3 is customizable and has been used for many applications with numerous types of hardware.



Water-cooled electric spindle motors are applicable to CNC engraving machines and used for high speed profiling, drilling, cutting, engraving and groove milling of wood, plastics, aluminum, rubber and other materials. Ranging from 24000 to 60000 RPM as per application for high finish quality product



Industrial grade design, dust proof design, stable and reliable.

-Applied to a variety of CNC systems, suitable for the use of the industry are: engraving machine industry, engraving and milling machine industry, CNC lathe industry, laser cutting machine industry, flame cutting machine industry, plasma cutting machine industry, automation production control industry.



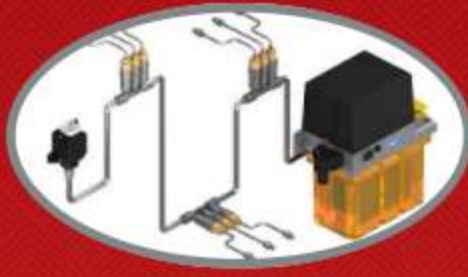
Delta's MS300 series is a standard compact vector control drive that inherits Delta's superior drive technology. It supports both IM and PM motor control for application flexibility and provides STO safety mechanism. Saving space, reducing setup and wiring time, while providing high efficiency and stability system – all included in the MS300 series with drive size reduced up to 40%.



Hiwin Linear guideways provides linear motion by re-circulating rolling elements between a profiled rail and a bearing block. The coefficient of friction on a linear guideway is only 1/50 compared to a traditional slide and they are able to take loads in all directions. With these features, a linear guideway can achieve high precision and greatly enhanced moving accuracy.



A shielded cable or screened cable is an electrical cable of one or more insulated conductors enclosed by a common conductive layer. The shield acts as a Faraday cage to reduce electrical noise from affecting the signals, and to reduce electromagnetic radiation that may interfere with other devices (see electromagnetic interference). The shield minimizes capacitively coupled noise from other electrical sources. The shield must be grounded to be effective.[1] The shield should be electrically continuous to maximize effectiveness, which includes cables splices.



System continues to operate if one point becomes blocked. Easy system expansion. Able to pump long distances and within a wide temperature range. Efficient for proper lubrication and to maintain efficiency of machinery.



Automatic Tool Change Spindles are applicable to CNC Milling ,Drilling, Engraving processing and widely used.. angular contact bearing or ceramic ball bearings are used. with such bearings, the strength and stiffness of electrospindles are greatly improved.



Telescopic and Bellows Covers are provided to prevent damage to Ball Screws and LM Guideways from dust particles, metallic chips and foreign particle .Cover is manufactured with the utmost strength to protect machines from various types of hazards.



Cable carriers permit bending in one direction. In combination with rigid mounting of the ends of the carrier, this can entirely prevent the enclosed cables from flopping in undesired directions and becoming tangled or crushed.

Mini CNC Router

Applications

- Brass
- Aluminium
- PCB
- Jewellery
- Stone Engraving
- Wood
- Derlin, Nylon, Teflon
- Copper
- Glass
- Plastic



MODEL	UNIT	KAR 321	KAR 642
Travel Size	mm	300x200x100	600x400x200
Table Size	mm	400x450	700x650
Motion System		LM Guide and Ball Screws	LM Guide and Ball Screws
Precision Motor		Easy Servo Motors	Easy Servo Motors
Load on table	kg	30	100
Spindle Power	Kw	2.2	2.2
Spindle	RPM	24000	24000
Axis Rapid	mm/min	5000	5000
Maximum Tool Diameter	mm	12	12
Feed Rate	mm/min	4000	4500
Positioning Accuracy	mm	0.03	0.03
Repeatability	mm	0.02	0.02
Software		Mach3/DSP	Mach 3/DSP
Z_Callibrator		Yes	Yes
Weight		350	500
Machine Layout	mm	800x700	1000x1000

Standard Accessories

- Auto Lubrication System
- Licensed Software
- HIWIN Ball Screw And LM Guide
- Easy Servo Motors
- Delta VFD
- Manual Pulse Generator
- Spindle Cooling Tank
- Machine Lamp



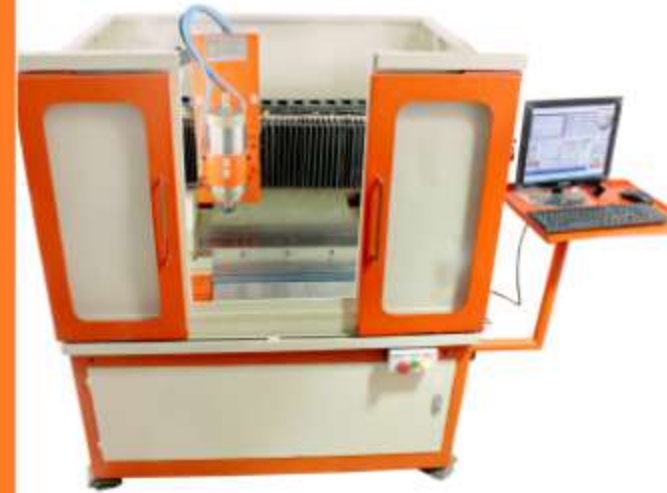
Optional Accessories

- Pre-Configured Computer System
- Spindle Cooling Oil
- Engraving Tool Set
- Work-piece Clamping Set
- DSP System
- T-slot bed/ M10 Bolt bed
- ATC Spindle
- Spindle Chiller
- 4th axis

Milling Cum Engraving Machine

Applications

- Hard Metals
- PCB
- Stone Jewelry
- Wood
- Derlin
- Nylon
- Teflon
- Copper Electrode
- Glass
- Plastics



MODEL	Unit	KAE321	KAE642
Travel	MM	300X200X100	600X400X200
Table	MM	350X250	650X450
Motion System		LINEAR MOTION GUIDEWAYS	LINEAR MOTION GUIDEWAYS
Motors		SERVO (Leadshine /Delta(Advance))	SERVO (Leadshine/(Delta(Advance))
Load On Table	KG	80	200
Spindle Power	KW	3.2	5.5
Spindle RPM		24000	24000
Axis Rapid	MM/MIN	10000	10000
Feed Rate	MM/MIN	8000	8000
Maximum Tool Diameter	MM	12	16
Positioning Accuracy	MM	0.03/0.01(Advance)	0.03/0.01(Advance)
Controller		MACH3	MACH3
Machine Layout	MM	1500X1100	1700X1600

***Available in advance Model as well

Standard Accessories

- Auto Lubrication System
- Tool Zero Calibrator
- Licensed Software
- Windows
- HIWIN Ball Screw And LM Guide
- Delta VFD
- Manual Pulse Generator
- Telescopic and Bellow Covers
- Spindle Cooling Tank
- Machine Lamp



Optional Accessories

- Spindle Cooling Oil
- Engraving Tools
- Work-piece Clamping Set
- T-slot bed/ M10 Bolt bed
- Cutting Oil
- ATC Spindle
- FANUC/DELTA/MITSUBISHI Controller
- Spindle Chiller
- High Power Spindle
- 4th Axis



**JEWEL
MILL**
JEWELRY
ENGRAVING
MACHINE



MODEL	UNIT	Jewel Mill
Travel Size	mm	300x300x200
Table Size	mm	350x350
Load on table	kg	15
Spindle Power	Kw	2.2
Spindle	RPM	24000
Axis Rapid	mm/min	5000
Maximum Tool Diameter	mm	6
Feed Rate	mm/min	4000
Positioning Accuracy	mm	0.03/0.01(Advance)
Repeatability	mm	0.02/0.01(Advance)
Software		Mach3/DSP
Lubrication System		Yes
Motors		Easy Servo/Servo(Advance)



****4th Axis Optional***

Special Purpose Machines (SPM)

Designing And Manufacturing of machines as per your requirement

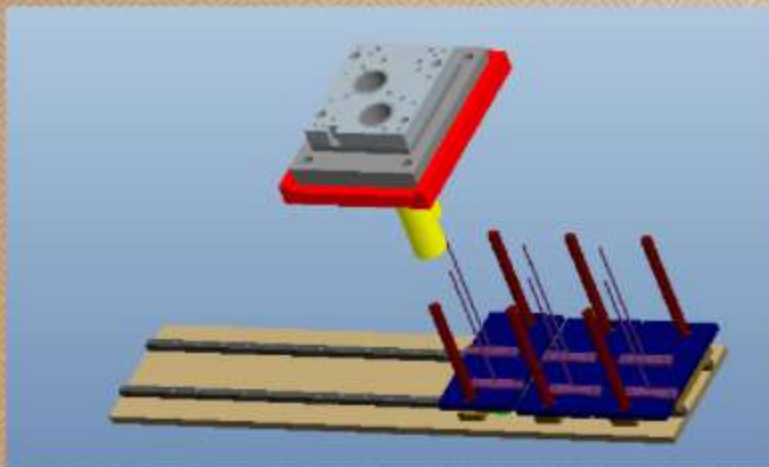
- Innovative Filter Manufacturing Co.(Saudi Arabia)
Filter and Mask Counter



- Manoj Wheels(Bawana, Delhi)
System for Wheel Grinding



- MINDA-UNO (Manesar)
Auto Stack Project



- Blue Star Eng.(Maharashtra)
SPM Drilling



Company Profile

We began our journey in 2019 after years of manufacturing experience. Our aim is to become the leading manufacturer of CNC and automation machinery in India .We have a variety of products ranging from CNC Engraving machines ,CNC Milling Cum Drilling machine, CNC Routers and other custom robots And Machines.

Innovation and solution to your industrial problems remains our foremost priority. Consensus is that succeeding in today's business environment requires more than just growing sales and cutting cost. It requires continuously finding new and better ways of doing business. Better product, better services, better processes. But for innovation to truly thrive, it can't simply be a mandate from the top or once a quarter initiative .It has to be a part of company's culture, built into the fabric and DNA of the organization over time and supported by a defined ongoing process.

Thanks to the experience accumulated over the decades, seamless interplay of our mechanics and electronics designers and manufacturers, as well as modern machinery, we are able to offer extremely competitive high-quality products to our clients.

We provide comprehensive solutions to our clients' needs and finalizing our products to the maximum degree. We seek to establish a long-term partnership and work in collaboration all the way from prototypes to efficient mass production. From the very first stages of the process, our highly adept designers strive to find the best approaches together with the client. As we have the ability to manufacture our own tools, our production is cost-efficient, versatile, and matching up to your individual requirements. We are also strict observing environmental requirements.

Services include design, manufacturing and installation. Customers can be found from various areas of process and production industry. Solutions are used by various robot integrator's, automation companies and machine building industry. We provides high quality solutions for machine, metal- and plastic industry. Quick and easily.

Terms And Conditions

- Warranty period: 12 months from the date of supply, warranty is void in case of accident / mishandling / service by unauthorized personnel.
- Our equipment's are manufactured as per the details provided in our quotation/catalogue, but due to the company's policy of continuous development and improvement, we reserve the right to change or modify the design or construction without notice. Hence the illustrations in our catalogue are not binding and may be changed without prior notice or obligation.
- We shall not be liable for any failure or delay in the performance of machine for the period that such failure or delay is due to causes beyond its reasonable control, including but not limited to acts of god, war, strikes or labor disputes, embargoes, government orders or any other force majeure event.
- Mini CNC Router are meant for Engraving on Soft metals(plastics, brass, copper, aluminum etc) and Carving on Wood And Stone , using it for the machining of any other material is a warranty void
- Engraving Machine series are built to engrave on any material, using it for milling is a warranty void.
- In case of wear and tear of mechanical parts due to improper lubrication and improper handling of lubrication system, of the parts is a warranty void.
- Burning of any electronic spare part due to over and under voltage would not be covered under Warranty terms.
- Damage to machine due to natural cause like earthquake, tsunami, flood, rat or any other animal attack, any natural disaster would not be entertained in warranty period.
- Burning of cutting oil, lubrication and water pump motor is not part of warranty coverage.
- Damage due to improper maintenance of essential fluids (like cutting oil, spindle coolant, lubrication oil) is a void of warranty.
- Machinery Color may vary from pictures displayed
- Damage to machinery during transportation would not be entertained in warranty. Transit insurance should be arranged by client.
- Machinery inspection at our ex-works.
- Using the machinery , other than the described job while selling or mentioned applications is a warranty void.